

ELEVATOR COMPONENTS CATALOG

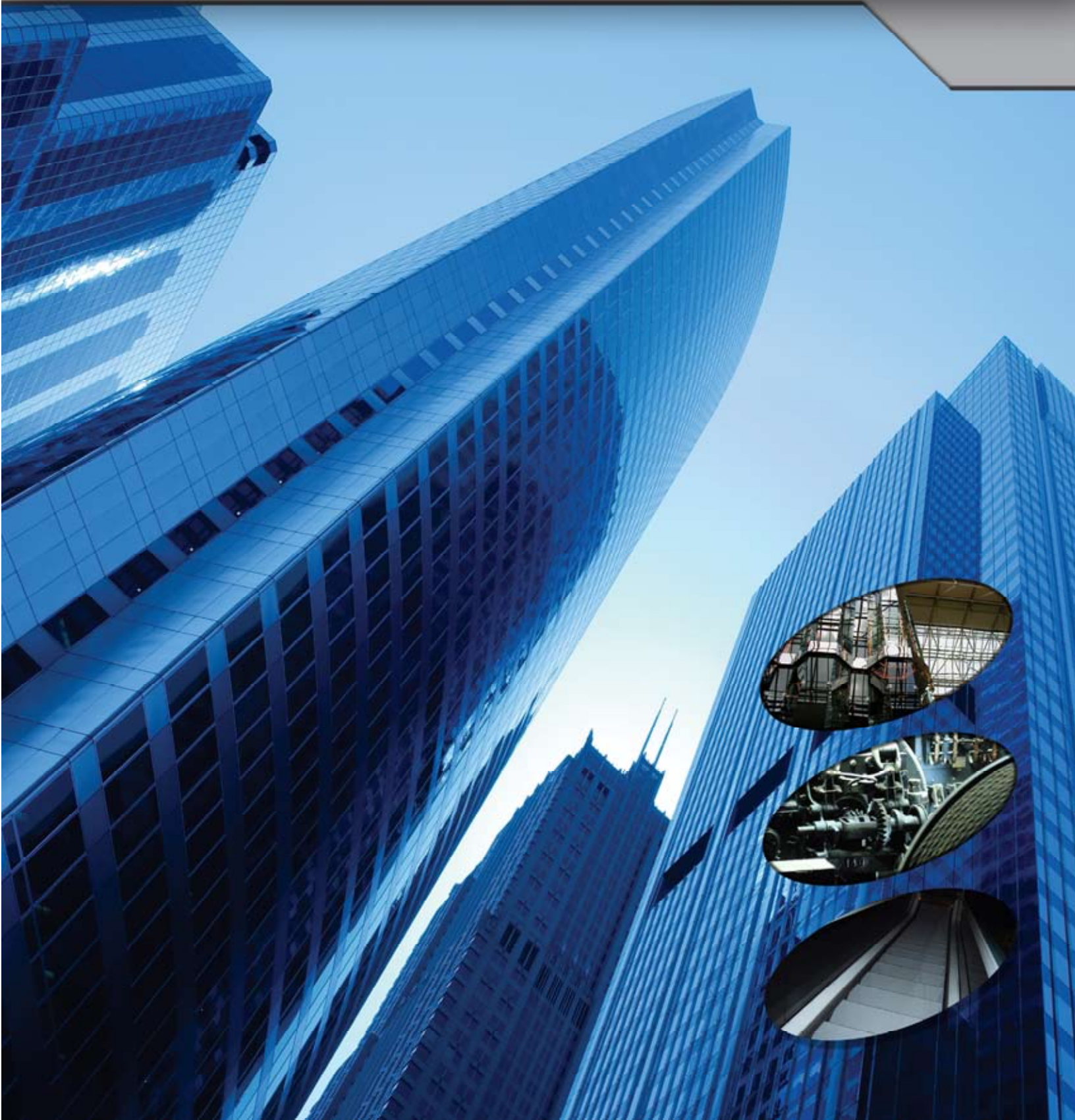


Table of Contents

Square D / Telemecanique

D Line Contactors/Overload Relays	1-2
F Line Contactors/Overload Relays	3
K Line Contactors/Overload Relays	4
Ice Cube Relays	5
Limit Switches	6
Safety Switches	6
Control Transformers	7
Pendant Stations	7

Tri-Tronics

Single / Dual Beam Electric Eye	8
LEADINGEDGE Waterproof Series	8
LEADINGEDGE Light Screen Door Control	9

Zzipco

Wedge Sockets	10
---------------	----

Rittal

Air Conditioners	11
------------------	----

Baldor

Premium Efficiency Motors	11
---------------------------	----

Crouzet

Input / Output Modules	11
Phase Loss Relay	11

Littelfuse

Fuses and Fuseholders	12
-----------------------	----

Phoenix Contact

Terminal Blocks	12
Power Supplies	12

Danaher

Encoders	13
----------	----

Square D / Telemecanique

D-LINE CONTACTORS



UL/CSA Elevator Duty Rated

Old Style 12amp - 32amp



Applications

- 1 Door Open / Close
- 2 Run - Start

New Style 9amp - 32amp



Applications

- 1 Door Open / Close
- 2 Run - Start

MAX HP RATING

Catalog #	Max Motor Amp	200V	230V	460V
LC1D1201	12 amp	3	3	7.5
LC1D1801	18 amp	5	5	10
LC1D2501	25 amp	7.5	7.5	15
Catalog #	Max Motor Amp	200V	230V	460V
LP1D2501	25 amp	7.5	7.5	15
LP1D3201	32 amp	10	10	20

AC COIL VOLTAGE

DC COIL VOLTAGE

MAX HP RATING

Catalog #	Max Motor Amp	200V	230V	460V
LC1D09	9 amp	2	2	5
LC1D12	12 amp	3	3	7.5
LC1D18	18 amp	5	5	10
LC1D25	25 amp	7.5	7.5	15
LC1D32	32 amp	10	10	20

(*) AC and DC Coils.

40amp - 150amp



Applications

- 1 Run / Start
- 2 Drive Isolation.
- 3 Power Contactor.

MAX HP RATING

Catalog #	Max Motor Amp	200V	230V	460V
LC1D40	40 amp	10	10	30
LC1D50	50 amp	15	15	40
LC1D65	65 amp	20	20	50
LC1D80	80 amp	25	30	60
LC1D150	150 amp	40	50	100

(*) AC and DC Coils.

(*) Please contact us for Coil voltages.

D-F Line Auxiliary Contacts



COMPOSITION

Catalog #	NO	NC
LADN22	2	2
LADN13	1	3
LADN40	4	0
LADN04	0	4
LADN31	3	1
LADN11	1	1
LADN20	2	0

Instantaneous Auxiliary Contact Blocks

D-LINE CONTACTORS

D-LINE CONTACTOR ACCESSORIES

Square D

REVERSING CONTACTORS

Reversing Contactors 9amp - 32amp



Applications

- 1 Door Open / Close
- 2 Run - Start
- 3 Y- Δ

MAX HP RATING

Catalog #	Max Motor Amp	200V	230V	460V
LC2D09	9 amp	2	2	5
LC2D12	12 amp	3	3	7.5
LC2D18	18 amp	5	5	10
LC2D25	25 amp	7.5	7.5	15
LC2D32	32 amp	10	10	20

(*) AC and DC Coils.
Please contact us for Coil volatges.

UL/CSA Elevator Duty Rated

Reversing Contactors 40amp - 150amp



Applications

- 1 Run - Start
- 2 Y- Δ

MAX HP RATING

Catalog #	Max Motor Amp	200V	230V	460V
LC2D40	40 amp	10	10	30
LC2D50	50 amp	15	15	40
LC2D65	65 amp	20	20	50
LC2D80	80 amp	25	30	60
LC2D150	150 amp	40	50	100

(*) AC and DC Coils.
Please contact us for Coil volatges.

OVERLOAD RELAYS

Ambient Compensated Bimetallic Overload



- + Wide range of amperage sizes in stock. (Consult us).
- + Optional Din Rail mounting Kit available.

Coils and RC / Varistor Coil Suppressors



Catalog

LX...

- + Rated Nominal Voltage: 12 to 480 Volt.



Catalog

LA4D...

- + Limitation of Transient Voltage.

REPLACEMENT COIL AND ACCESSORIES

D-LINE CONTACTORS

Square D / Telemecanique

F-LINE CONTACTORS

UL/CSA Elevator Duty Rated



115amp - 800amp



MAX HP RATING

Catalog #	Max Motor Amp	200V	230V	460V
LC1F115	115 amp	30	40	75
LC1F150	150 amp	40	50	100
LC1F185	185 amp	50	60	125
LC1F265	265 amp	60	75	150
LC1F330	330 amp	75	100	200
LC1F400	400 amp	100	125	250
LC1F500	500 amp	150	200	400

Reversing 115amp - 800amp



+ Components available for factory or GCF assembly

Overload Relays Solid State



Catalog #	Current Range Amp
LR9F5369	90 - 150 amp
LR9F5371	132 - 220 amp
LR9F7375	200 - 330 amp
LR9F7379	300 - 500 amp
LR9F7381	380 - 630 amp

F-LINE CONTACTORS

K-LINE MINI-CONTACTORS



UL/CSA Elevator Duty Rated

K-LINE MINI-CONTACTORS

6 amp - 12 amp



MAX HP RATING

Catalog #		Max Motor Amp	MAX HP RATING		
AC Coil	DC Coil		200V	230V	460V
LC1K0610	LP1K0610	6 amp	1.5	1.5	3
LC1K0910	LP1K0910	9 amp	2	3	5
LC1K1210	LP1K1210	12 amp	3	3	7.5

*Please contact us for Coil voltages.

Auxiliary Contact Blocks



COMPOSITION

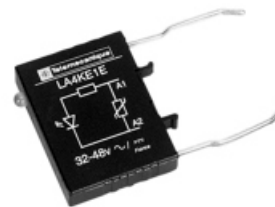
Catalog #	NO	NC
LA1KN20	2	0
LA1KN02	0	2
LA1KN40	4	0
LA1KN31	3	1
LA1KN22	2	2
LA1KN13	1	3
LA1KN04	0	4

Overload Relays and Accessories



+ Wide range of amperage sizes in stock. Contact us for more info.

Suppressor module with LED



Catalog #
LA4K...

+ Limitation of transient voltage.

ICE CUBE RELAYS-ZELIO



Zelio Plug-in Relays and Power Relays



ICE CUBE RELAYS

A comprehensive selection of relays responding to the most demanding standards at 3, 5, 10 and 15 Amp.

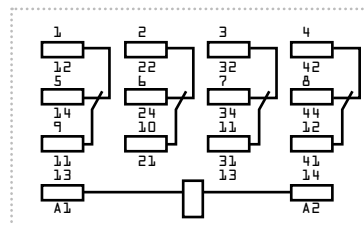
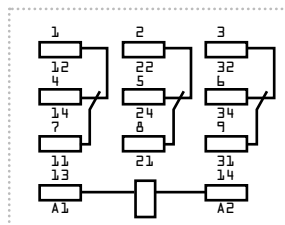
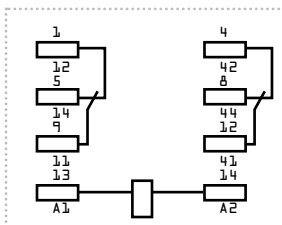
Power relays: 30 Amp.

Some of the features include:

- + RXM Miniature Relays.
- + RPM Miniature Power Relays.
- + RUM Universal Relays.
- + RPF Power Relays.
- + Spring return test button for testing the contacts (standard).
- + Green LED indication of relay status (depending on version).
- + Mechanical indication of relay status (standard).
- + Plug-in protection module to protect against electrical spikes.
- + Number and type of contacts: 2PDT, 3PDT, 4PDT.

*For sockets please contact us.

WIRING DIAGRAMS



Coil Voltage
24 VDC
110 VDC
24 VAC
120 VAC

Square D / Telemecanique

LIMIT SWITCHES



LIMIT SWITCHES

Metal Limit Switch



Catalog #
XCKJAEQ3669

- + With Heavy Duty positive opening.
- + Adjustable roller lever.
- + 1 NO / NC Contact.

Break Switch 9007ms



Catalog #
9007MS

- + Break Switch
- + 1 NO / NC Contact.

Square D / Telemecanique

SAFETY SWITCHES

SAFETY SWITCHES

General Duty



240 VAC	
Catalog #	AMP
D321N	30 amp
D322N	60 amp
D323N	100 amp
D324N	200 amp

- + 4 Wire 3 Blades and Fuseholders, 1 Neutral

Heavy Duty



240 VAC	
Catalog #	AMP
H321N	30 amp
H322N	60 amp
H323N	100 amp
H324N	200 amp

- + 4 Wire 3 Blades and Fuseholders, 1 Neutral

CONTROL TRANSFORMERS



Type T and Multi Tap Transformers



+ Type T Transformers are designed with low impedance windings for excellent voltage regulation and can accommodate the high inrush current associated with contactors, starters and solenoids.

Primary Voltages:	240/480 V and 208V
Secondary Voltages:	120 V
VA:	From 25 to 5000 VA. UL.

CONTROL TRANSFORMERS

PENDANT STATIONS

Run Station / Temporary Inspection



+ Available according to your specifications.

PENDANT STATIONS

PHOTO EYE SYSTEMS



Pre wired Dual / Single Beam Style

PHOTO EYE SYSTEMS



Description

- + Dual Eye pre wired system includes two mounting brackets, two reflectors, two reflector mounting brackets, 15' of cable and ON/OFF Switches for each eye.
- + Same as UEES-1A with the addition of adjustable Automatic Disable Timer.
- + Replacement eye with connector for Model UEES-1A
- + Replacement eye with connector for Model UEES-2A
- + Individual eye system includes one eye mounting bracket, one conduit adapter, one reflector, 6' of cable and hardware.
- + Same as UEER1, with the addition of adjustable Automatic Disable Timer.

Model

UEES-1A

UEES-2A

UEER1M

UEER2M

UEER1

UEER2

LEADINGEDGE

Waterproof W Series

LEADINGEDGE



Description

- + Technology originally developed for the NASA shuttle launch site is now available for you. Great for wash-down environments, outdoor elevators, parking garages, or any extreme or wet conditions. These edges are completely submersible in water.

Catalog

Complete Waterproof System

EDGE-5W

Complete Waterproof System with Nudging circuit

EDGE-5NW

Black Waterproof Leading Edge without Power Supply

EDGE-6W

Power Supply in Waterproof Housing

PSC-5W

Ratings: NEMA 4, IP67



Light Screen Door Control



UNIQUE FEATURES AND BENEFITS

- + Totally immune to ANY ambient light, including strobes, fluorescent and direct sunlight.
- + All models can be installed in either Center or Side parting doors.
- + Automatic Dynamic Sensitivity Adjustment (DSA) compensates for severe misalignment, condensation and damaged or dirty lenses; also provides "on-the-fly" dynamic adjustments of sensitivity as doors open or close.
- + Energy management system improves reliability by automatically reducing power to LED's by 75% and to the power supply by 50% when elevator doors are closed.
- + Unique installation and test procedures can be easily performed by one person.
- + Designed and built in the U.S.A.

Edge Colors

HOW TO SPECIFY



Anodized Array Colors

- Bright Gold
- Bright Silver
- Black

Standard Systems Include Power Supply	Catalog #
Black Leading Edge	EDGE-4
Silver Leading Edge	EDGE-4S
Gold Leading Edge	EDGE-4G
Black Leading Edge With Nudging Circuit	EDGE-4N
Silver Leading Edge With Nudging Circuit	EDGE-4NS
Gold Leading Edge With Nudging Circuit	EDGE-4NG
Independent Systems (less the Power Supply)	
Black Leading Edge	EGDE-6
Silver Leading Edge	EGDE-6S
Gold Leading Edge	EGDE-6G
Converts EDGE-6 plugs to 3-wires for easy connection to the MAGIC-EDGE or existing power supply/controller	ECI-1
Adaptor designed for GAL MOVFR operator.	ECI-3
Power Supply in Non-Metallic Housing	PSC-4
Nudging Control Board with Buzzer Circuit	NUDGE-1
Light Beam Array Replacement Cable, 15 ft.	LA-2CABLE
Receiver Array Replacement Cable, 15 ft.	RA-2CABLE
Extension Power Cable - 25 ft.	LEEC-25

LEADINGEDGE

Zzipco

WEDGE SOCKETS



WEDGE SOCKETS



Description

- + Wedge Sockets: Our "Z" wedge sockets have been tested using high strength IWRC wire rope, thus meeting and exceeding the standards of A17.1 and B44 Codes.
- + We are individually approved by the State of New York.
 - MEA # 629-06-M
 - ASME A17.1
 - California Approved
- + Our wedge sockets are color coded so that the wedge and socket always match, thus, the inspection process is safer and easier as compared to others.

WIRE ROPE WEDGE SOCKETS 3/8" - 5/8" (10 mm - 16 mm)

Rope Size	Wedge Socket Part NO.	THD Size	Rod Length
5/8" (16mm)	ZW-16-5/8-24	M20	24"
5/8" (16mm)	ZW-16-5/8-18	M20	18"
1/2" (13mm)	ZW-13-1/2-24	M18	24"
1/2" (13mm)	ZW-13-1/2-18	M18	18"
3/8" (10mm)	ZW-10-3/8-12	M16	12"

Wall Mounted



Description

- + 120 / 230 Volt.
- + 50/60 Hz
- + 1100 BTU to 3600 BTU

Premium Efficiency



Description

- + Motors available in all HP and Volt-ages.
- + Contact us for price and availability

Crouzet
RELAYS

Input - Output Modules



Description

- + New Industry Standard.
- + LED status Indicator

Catalog #	I/O
C4IAC	Input AC
C4IDC	Input DC
C4OAC	Output AC
C4ODC	Output DC

Phase Loss Relay



Catalog #
 PWRL

Threshold Voltage: 160 - 230 VAC
Output: SPDT

- + Monitors
 - Phase Sequence
 - Loss of Any Phase even if Induced Voltage Reaches 95% of Nominal Voltage.
- + Under Voltage Detection
- + Trip Delay Timer Built-in
- + LED Relay Status Indicator

Phoenix Contact

TERMINAL BLOCKS



POWER SUPPLIES

Terminal Blocks



Description

Universal Modular Terminal Blocks

2.5 mm to 35 mm

Screw Clamp

Cage Clamp

IDC [Insulation Displacement]

- + The System ensures maximum user protection as a ground terminal block and plug are Finger-Safe.

Power Supplies



Description

Compact, DIN-rail mounted power supplies

Output from 5 to 48 VDC with current from 50mA up to 40A.

- + Shock-proof industrial housing.
- + LED status indicator in the secondary circuit.
- + Front-access terminal block connection for easy wiring.
- + Regulated low ripple outputs.
- + Convenient snap-on DIN-rail mounting.
- + Fused input and output.

Littelfuse

FUSES AND FUSEHOLDERS

Fuses



Description

- + Midget Fuses FLQ for protection of high inrush currents.
- + Class RK5 Fuses FLSR For excellent protection of motors.
- + Class CC Fuses KLDR and KLKR for general purpose protection.
- + Semiconductor Fuses Very Fast-Acting.

Voltage Ratings: 240 Volt / 600 Volt.

Interrupting Ratings: AC 200,000 amp.

TERMINAL BLOCKS

POWER SUPPLIES

FUSES



Sealed Hollow Shaft and High Resolution Encoders



Sealed Hollow Shaft

- + Reduces mounting time and labor.
- + Direct shaft mount eliminates shaft alignment procedures.
- + Flexible tether minimizes bearing load.
- + Robust metal hubshaft.
- + Electrically isolated/ thermally insulated.
- + Unbreakable disk.

Catalog

HS20
HS35



High Resolution

- + High resolutions up to 10,000 PPR direct read.
- + Industry standard 2.5" package.
- + Environmentally sealed to NEMA 4/ IP66.

Catalog

HA625
HA725

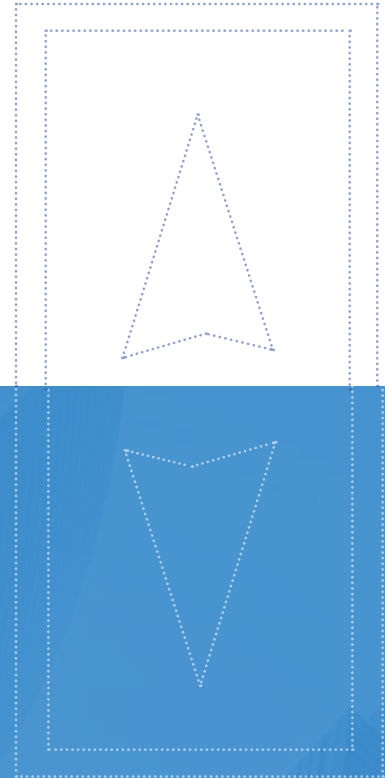
Incremental Shaft Encoders for Geared Elevators



- + Incremental Output
- + 30...45 mm hollow shaft
- + Rugged mechanical design
- + Unbreakable disc
- + Integrated diagnostic system
- + The central element of RI80-E is the latest HENGSTLER OPTOASIC technology with the following key benefits:
 - Highest EMC immunity.
 - Outstanding reliability.
 - Aging compensation by integrated LED light regulation.
 - Integrated monitoring of pollution, disk damage, LED lifetime, temperature.

Catalog

RI80-E



GCF Inc. provides automation and control technology products to the elevator OEM and service contractor market in the New York, New Jersey and Connecticut Metro area. GCF, Inc. supplies top quality products, supported by factory trained sales, applications and technical support engineers.

Founded in 1981, GCF, Inc. has three locations in the area to serve your needs. GCF, Inc. has grown through continuous employee development, creative management systems, strong customer focus and state of the art products.

We are committed to providing our customers a total solution of integrated products, engineering guidance and electronic commerce. Using our system, you can rely on GCF, Inc. to tailor a solution to fit your particular needs and requirements.

GCF-INC
119 Rockland Avenue
Northvale, NJ 07647
201 767 6100
Fax: 201 767 1221
www.gcf-inc.com

